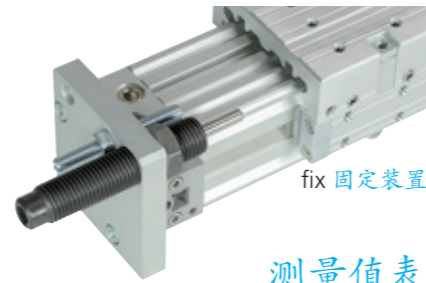
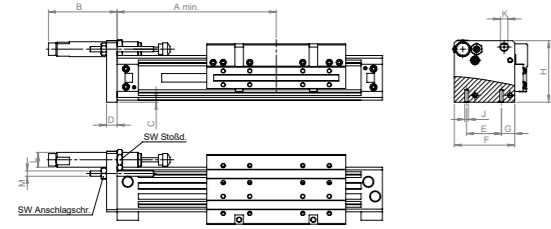


AS 停止调节件



fix 固定装置

测量值表

Measurements table

| Piston-Ø 活塞-Ø | Ø 18 mm | Ø 25 mm | Ø 32 mm | Ø 40 mm | Ø 50 mm | Ø 63 mm |
|------------------------------------|-----------|------------|------------|-----------|-----------|-----------|
| A (ZF / ZFK) | 80 / 57,5 | 100 / 67,5 | 120 / 77,5 | 150 / 95 | 180 / 105 | 215 / 125 |
| B (Manufacturer dep.) B (制造商部门) | 22,5 | 65 | 65 | 78 | 78 | 70 |
| C | 2 | 2 | 3 | 3 | 3 | 4,5 |
| D | 8 | 10 | 10 | 15 | 15 | 15 |
| E | 23,5 | 33 | 41 | 51 | 63 | 78 |
| F | 43,5 | 57 | 70 | 93 | 102 | 118,5 |
| G | 8 | 12,5 | 14,5 | 16 | 22,5 | 20 |
| H | 45 | 58 | 71,5 | 89 | 105 | 122 |
| J x thread depth J x 螺纹深度 | M3 x 10 | M4 x 10 | M5 x 12 | M6 x 15 | M8 x 20 | M8 x 20 |
| K | M6 | M8 x 1 | M8 x 1 | M8 x 1 | M8 x 1 | M8 x 1 |
| L | M10 x 1 | M14 x 1,5 | | M25 x 1,5 | | |
| M | M6 | M6 | M8 | M8 | M8 | M8 |

Example for order:
AS25 Stop adjustment fix for
ZF25 or ZFK25
(without shock absorber)

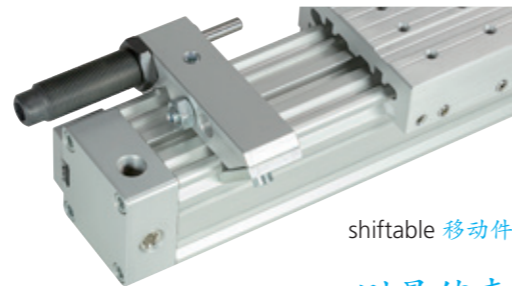
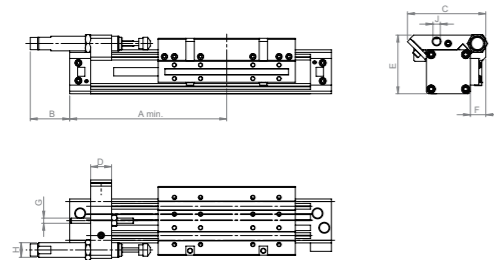
订单示例:
用于ZF25或ZFK25的AS25停止调节件
(无减震器)

Order number 订单编号

| | | | | | | | | |
|---|---|---|---|---|---|---|---|---|
| 1 | 2 | 5 | 8 | - | 0 | 0 | 0 | 1 |
|---|---|---|---|---|---|---|---|---|

AS Stop adjustment shiftable

AS 停止调节移动件



shiftable 移动件

测量值表

Measurements table

| Piston-Ø 活塞-Ø | Ø 18 mm | Ø 25 mm | Ø 32 mm | Ø 40 mm | Ø 50 mm | Ø 63 mm |
|--------------------------------------|------------|-------------|-------------|-----------|-----------|-----------|
| A at least (ZF / ZFK) 最小A (ZF/ZK) | 111,5 / 89 | 140 / 107,5 | 160 / 117,5 | 203 / 148 | 223 / 158 | 284 / 194 |
| B (Manufacturer dep.) B (制造商部门) | 20 | 60 | 60 | 96 | 96 | 80 |
| C | 62 | 75 | 84 | 105 | 126 | 140 |
| D | 15 | 20 | 20 | 30 | 30 | 40 |
| E | 43 | 56 | 69 | 86 | 104 | 116 |
| F | 13 | 15 | 18 | 23 | 24 | 25 |
| G | M6 | M6 | M8 | M8 | M8 | M8 |
| H | M10 x 1 | M14 x 1,5 | | M25 x 1,5 | | |
| J | | M8 x 1 | M8 x 1 | M8 x 1 | M8 x 1 | M8 x 1 |

Example for order:
AS25 Stop adjustment shiftable for
ZF25 or ZFK25
(without shock absorber)

订单示例:
ZF25或ZFK25的AS25停止调节移动件
(无减震器)

Hydraulic shock absorber
液压减震器

M10x1 / M14x1.5 / M25x1.5

Please get in touch with us for further information

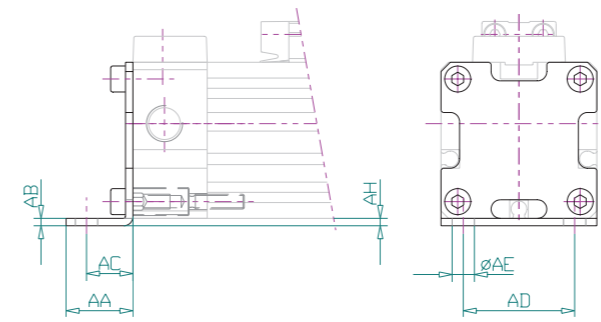
如需进一步信息, 请与我们联系

Order number 订单编号

| | | | | | | | | |
|---|---|---|---|---|---|---|---|---|
| 1 | 2 | 5 | 8 | - | 0 | 0 | 0 | 0 |
|---|---|---|---|---|---|---|---|---|



FB 安装托架

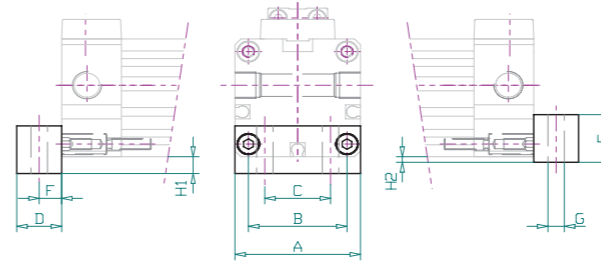


| | Ø 18 | Ø 25 | Ø 32 | Ø 40 | Ø 50 | Ø 63 |
|-------------------|-----------|-----------|-----------|-----------|-----------|-----------|
| AA | 15 | 18 | 20 | 30 | 28 | 30 |
| AB | 2 | 2 | 2-May | 3 | 3 | 3 |
| AC | 10 | 12,5 | 13,5 | 17,5 | 20 | 21 |
| AD | 20 | 30 | 40 | 50 | 60 | 75 |
| AE | Ø 6 | Ø 6 | Ø 7 | Ø 9 | Ø 9 | Ø 11 |
| AH | 2 | 2 | 3 | 3,5 | 3 | 4,5 |
| Order No. 订单编号 | 1182-0001 | 1252-0001 | 1322-0001 | 1402-0001 | 1502-0001 | 1632-0001 |

The order number indicated includes 2 mounting brackets and 8 screws.
上述订单编号包括2个安装托架和8颗螺丝。

FB Mounting block

FB 安装块



| | Ø 18 | Ø 25 | Ø 32 | Ø 40 | Ø 50 | Ø 63 |
|-------------------|----------------------|----------------------|----------------------|----------------------|----------------------|----------------------|
| A | 30 | 42 | 52 | 63 | 78 | 93 |
| B | 23,5 | 33 | 41 | 51 | 63 | 78 |
| C | 14 | 22 | 23,5 | 30 | 39 | 52 |
| D | 10 | 15 | 15 | 15 | 16 | 20 |
| E | 14,5 | 17 | 20 | 23 | 26 | 27,5 |
| F | 5 | 7,5 | 7,5 | 7,5 | 8 | 10 |
| G | Ø 4,5 | Ø 5,5 | Ø 7 | Ø 9 | Ø 9 | Ø 11 |
| H1 | 6 | 6 | 6 | 8 | 8 | 8 |
| H2 | 2 | 2 | 3 | 3 | 3 | 4,5 |
| Order No. 订单编号 | M3 x 14 1182-0005 | M4 x 20 1252-0005 | M5 x 20 1322-0005 | M6 x 20 1402-0005 | M8 x 20 1502-0005 | M8 x 20 1632-0005 |

The order number indicated includes 2 mounting blocks and 4 screws.
上述订单编号包括2个安装托架和4颗螺丝。